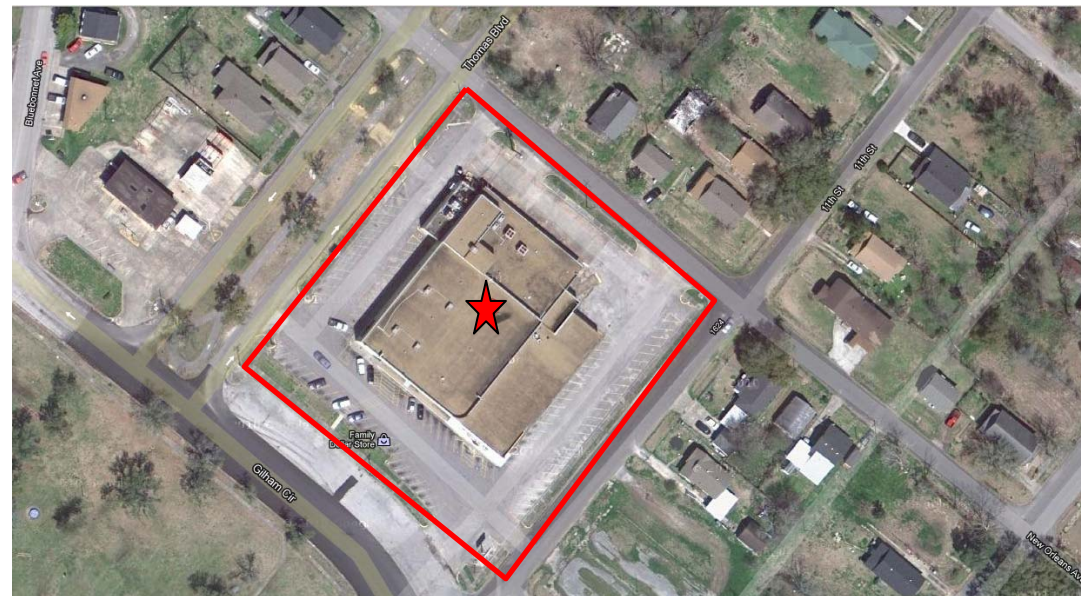


Demographics:	1 mile	3 miles	5 miles
Total Population	6,969	34,720	57,154
Total Households	1,828	8,888	15,220
Median Household Income	\$22,161	\$30,438	\$33,958
Average Household Income	\$33,069	\$41,168	\$46,635
Per Capita Income	\$13,208	\$15,297	\$18,120
White Population	23.20%	38.19%	40.30%
Black Population	1.50%	0.82%	0.90%
Hispanic or Latino Population	13.36%	31.18%	24.60%
Asian or Pacific Islander	0.11%	0.12%	0.12%
American Indian/Alaska Native	2.58%	1.17%	1.04%
Some Other Race Alone	65.31%	53.71%	51.44%
Two or More Races	7.30%	5.99%	7.14%



Gillham Center

190, 200, 230 Gillham Circle, Port Arthur, TX 77640
(Between Thomas Boulevard and 11th Street)

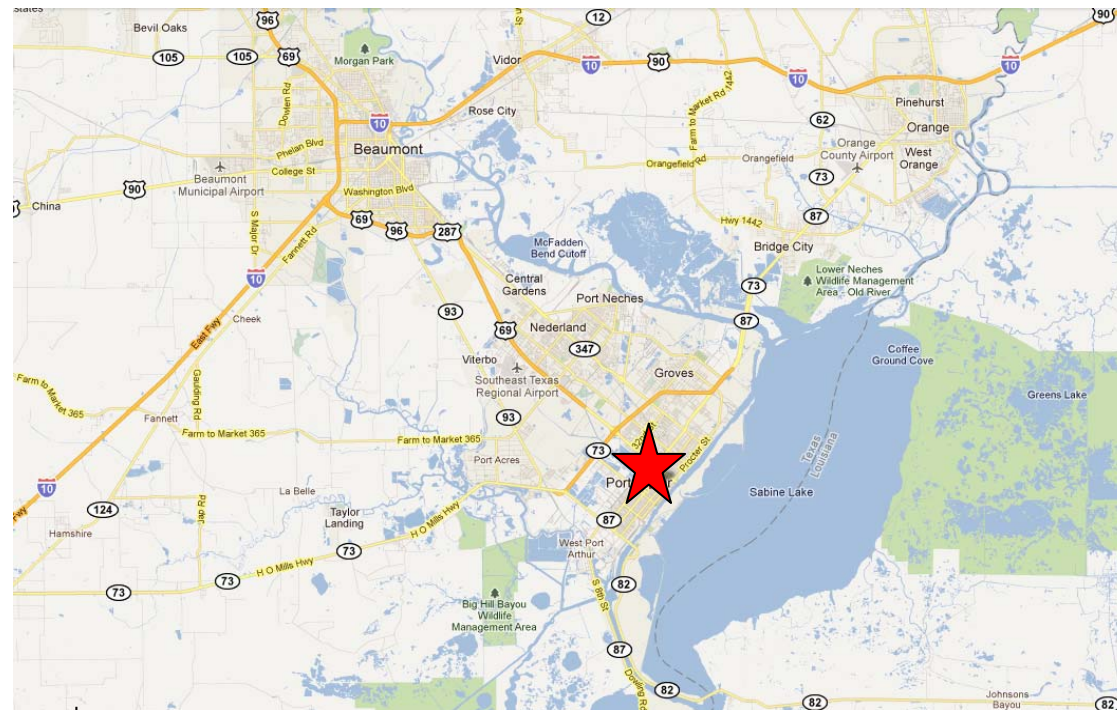
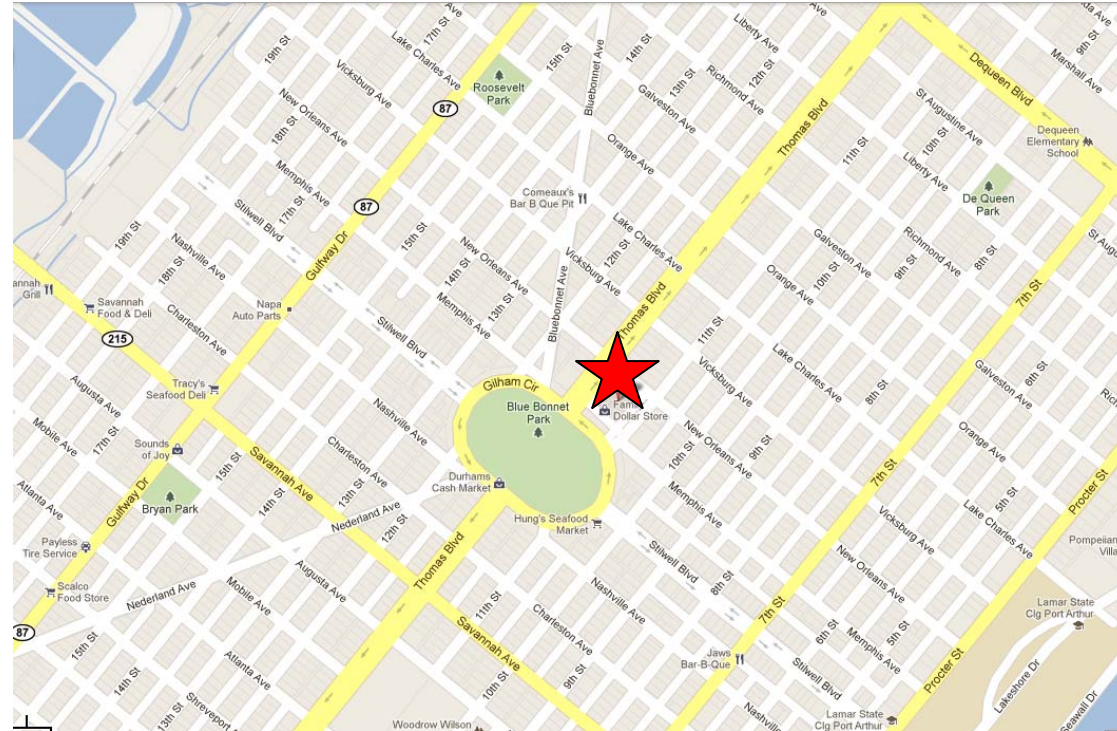


Property Highlights:

- GLA: 33,134 Square Feet
- Available:
 - M01: 7,930 Square Feet
 - M03: 13,539 Square Feet
- Anchored by Family Dollar
- Minutes from Routs 73 and 287/96
- Parking: 100 Spaces



GILLHAM CENTER



GILLHAM CENTER

